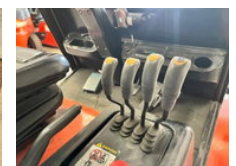


AG Trucks

Heli CPD50

General characteristics

Brand	Heli
Subcategory	Forklift
Year of construction	2016
Hours displayed	845
Condition	Used
General state	Good
Fuel	Electric
Reference	110866



Properties

Single weight	7.590kg
Serial number	5957
Max. lifting capacity	5.000kg
Lifting height	4.000mm
Mast type	Standard
Clearance height	2.900mm

Heli CPD50

Technical specifications

Transmission

Automatic

Description

ID110866 BRAND: Heli MODEL: CPD50 CONSTRUCTION YEAR: 2016 ENGINE: Electric HOURS: 849 (Hours read from display)
TRANSMISSION: Automatic MAST: 2 Stages HYDRAULIC VALVES: 4 x ATTACHMENT EQUIPMENT: Rotator, fork positioner LIFT
CAPACITY: 5000 kg (Lifting capacity with rotator 4500kg) LIFT HEIGHT: 4000 mm CONSTRUCTION HEIGHT: 2900 mm
HYDRAULIC VALVES: 4 FORKS LENGTH: 1600mm COLOR: Original

Accessories

- rotating fork clamp