

AG Trucks

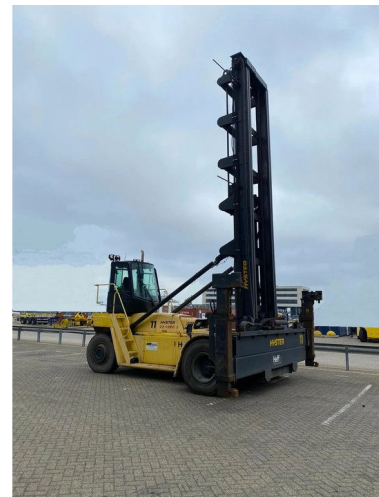
Hyster H22XM-12EC

GENERAL CHARACTERISTICS

ID	105005
Make	Hyster
Type	H22XM-12EC
Year	2014
Operating hours	22.372
Construction	Container stacker

TECHNICAL FEATURES

Fuel	Diesel
Vehicle identification number	1888M
Weight	41.400 kg
Lifting height	1.645 cm
Lifting capacity	9.000 kg



EXTRAS

DESCRIPTION

ID105005

MACHINE: Empty container handler
BRAND: Hyster
MODEL: H22XM-12EC
YEAR OF CONSTRUCTION: 2014
ENGINE: Diesel, Cummins
TRANSMISSION: Automatic
OPERATING HOURS: 22372
MAST: 2 Stages
ATTACHMENTS: Spreader
LIFT CAPACITY: 9000kg
LIFT HEIGHT: 16450mm
CONDITION: Good